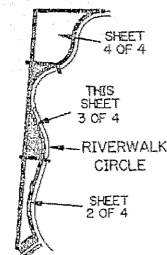


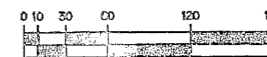
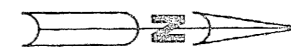
RIVERWALK - PLAT SIX - A

A PARCEL OF LAND LYING IN SECTION 21, TOWNSHIP 43 SOUTH,
RANGE 42 EAST, CITY OF WEST PALM BEACH,
PALM BEACH COUNTY, FLORIDA.

SHEET 3 OF 4 MAY, 1997



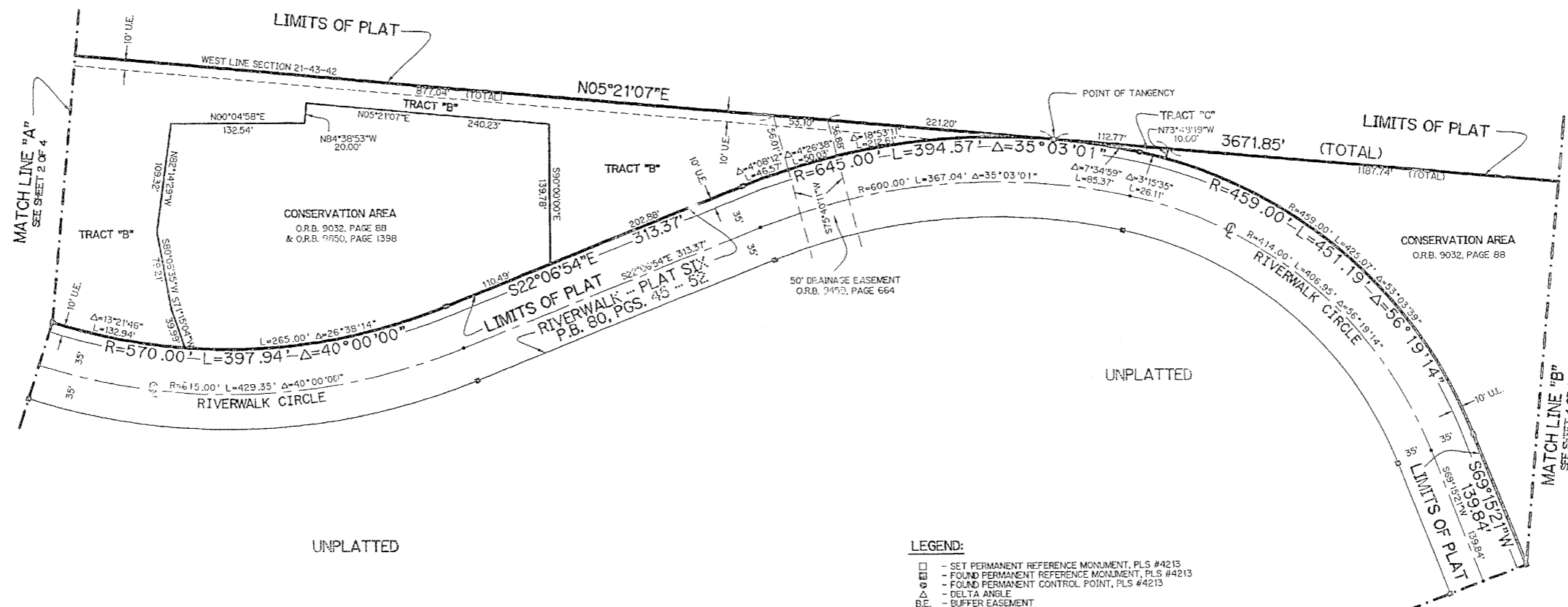
KEY MAP
N.T.S.



SCALE: 1" = 60'

UNPLATTED

UNPLATTED



LEGEND:

- - SET PERMANENT REFERENCE MONUMENT, PLS #4213
- - FOUND PERMANENT REFERENCE MONUMENT, PLS #4213
- △ - DELTA ANGLE
- B.E. - BUFFER EASEMENT
- D.E. - DRAINAGE EASEMENT
- L - ARC LENGTH
- N.R. - NOT RADIAL
- N.T.S. - NOT TO SCALE
- O.R.B. - OFFICIAL RECORD BOOK
- P.B. - PLAT BOOK
- PGS. - PAGES
- PLS - PROFESSIONAL LAND SURVEYOR
- P.S.M. - PROFESSIONAL SURVEYOR AND MAPPER
- R - RADIUS
- R.E. - RIVERWALK EASEMENT
- R/W - RIGHT-OF-WAY
- S.T. - SURVEY TIE
- U.E. - UTILITY EASEMENT

THIS INSTRUMENT PREPARED BY
PERRY C. WHITE, P.L.S. 4213, STATE OF FLORIDA
LAWSON, NOBLE AND WEBB, INC.
ENGINEERS PLANNERS SURVEYORS
WEST PALM BEACH, FLORIDA